

## MOCK-UP OF ISTER INTERACTIVE TOOL FOR ROMAN ECO-CULTURAL ROUTE

Work Package Title	WP T3 Mapping and promoting Roman network of routes and settlements
Activity No. and Title	3.3.3 User guide for the transnational interactive digital tool
Deliverable	D.T3.3.2
Deliverable Responsible	PP16 BOKU
Main Authors & Partner Acronyms	Clemens Beyer, Manfred Schrenk, Georg Neugebauer (BOKU)
Co-Authors & Partner Acronyms	
Reviewed by: Name and Partner Acronyms	Blaž Barborič (PP8 GI)
Status	Draft (D)
	Revised draft (RV)
	<b>Final (F)</b>
Length	34 pages

## Table of contents

Introduction	3
What is the Interactive Tool?	3
Mobile Version	4
Start page	4
Top row buttons	5
Bottom row buttons	5
Cookies	6
Languages	7
Options	9
About	12
Map	13
Site Info Details	17
Search	21
Tracking	22
QR Code Reader	23
Desktop Version	24
Site structure	24
Title bar	24
Map view	24
Text view	24
Button bar	25
Cookies	26
Languages	27
Map query	28
Site Info Details	29
Search	31
Options	32
About	34

## Introduction

### What is the Interactive Tool?

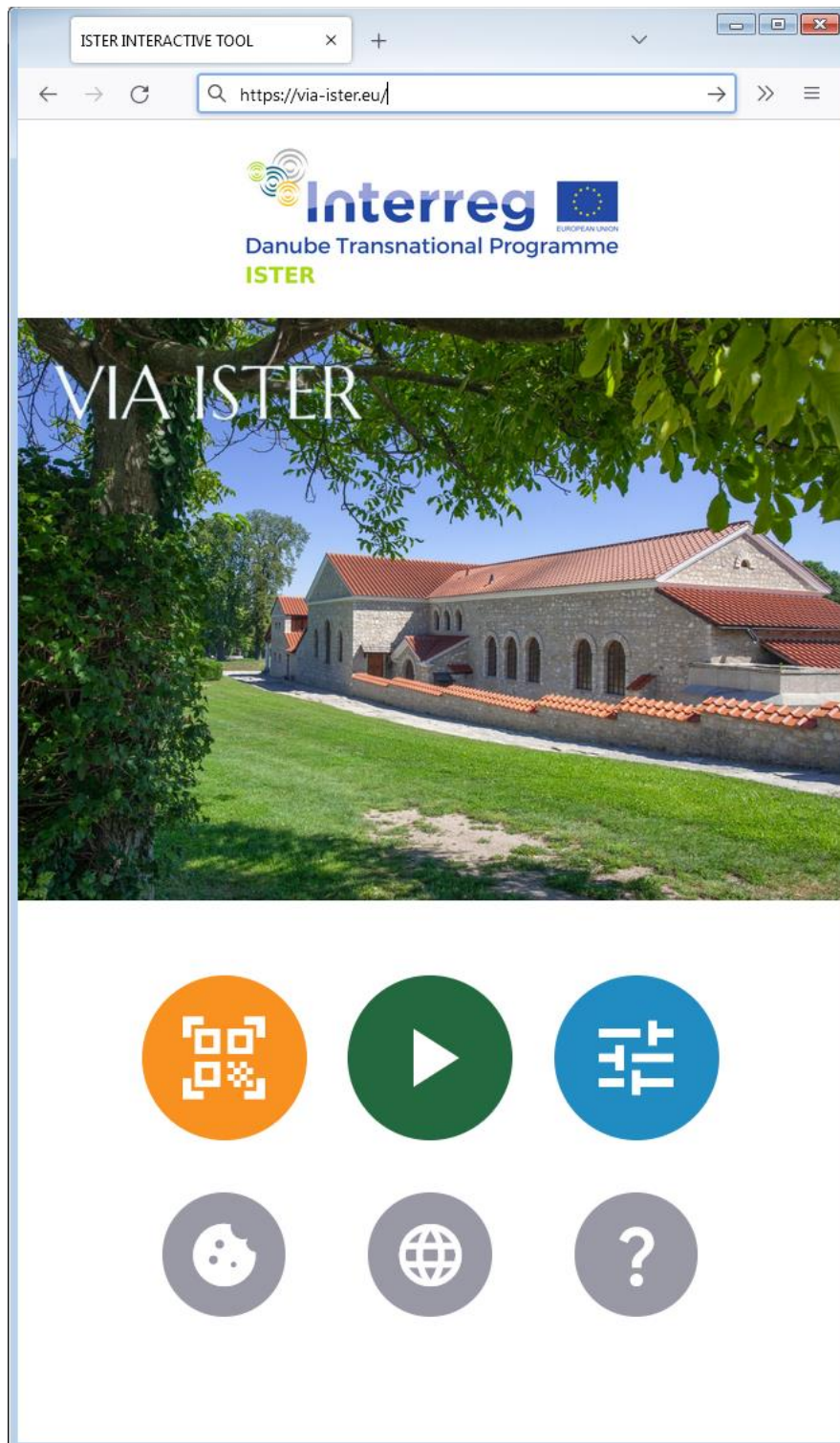
The VIA ISTER Interactive Tool is the first version of the open digital app for Roman eco-cultural route valorisation based on the outcomes of the ISTER project. The Interactive Tool is a website. It runs on every device which has a working standard internet browser without having to install or download anything. There is a desktop version as well as a mobile version. Both versions are designed as responsive websites, they automatically adapt to the user's screen and/or window size.

The address of the Interactive Tool is <https://www.via-ister.eu/>.

The Interactive Tool will be maintained by the project partners at least until the end of the year 2027.

## Mobile Version

### Start page



The startpage of the interactive tool is shown upon call of the address <https://www.via-ister.eu>. There is the project logo on top, followed by some example images which automatically change every few seconds, and some buttons. Top row: QR code scanner, start button, options button. Bottom row: Change cookies consent, language switcher, about page/imprint.

### Top row buttons

1. The QR code scanner button launches the camera of your mobile device (see QR code reader section).
2. The start button shows the map as the central element of the ISTER Interactive Tool. The default map view shows the whole project area with a background map and all monuments. The map can be used like in any other application or website: move the map with one finger, zoom it with two fingers, tap once to retrieve additional information.
3. The options page shows a lot of useful settings, like the layers visible on the map or other switches to toggle the functionality of the Interactive Tool.

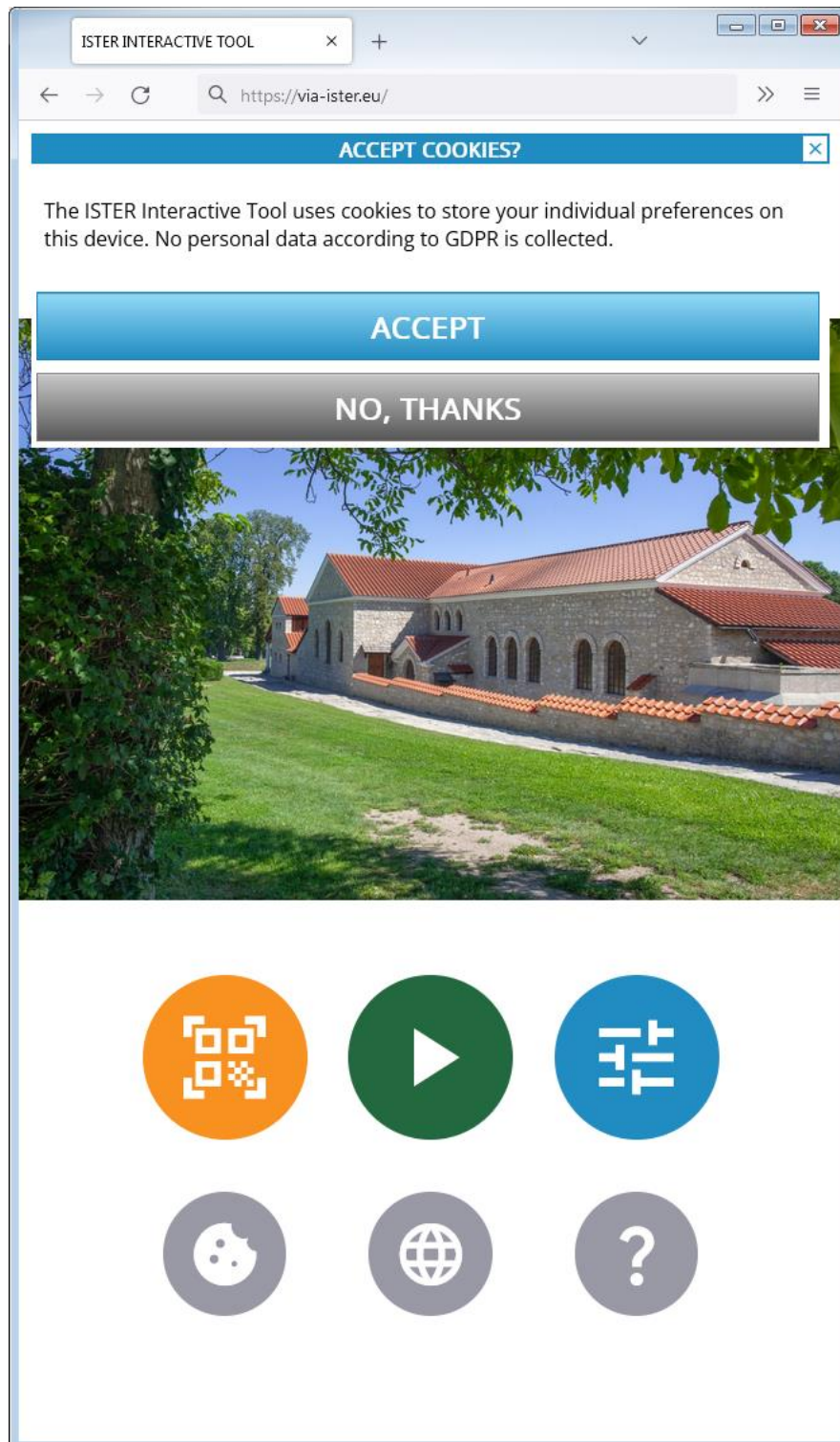
### Bottom row buttons

1. The cookies consent button allows you to change the cookie consent at any time. The initial value of the cookie consent is set upon your first visit of <https://www.via-ister.eu>.
2. The language button shows the language control panel. It allows you to set or auto-detect the language in which the elements of the Interactive Tool are shown to you. Each national language of the project partners is available for choice. Information on monuments and milestones are available in the respective national language and in English, however, this information is not available in other languages besides these two.
3. The about button shows the imprint of the website including all necessary and/or mandatory statements according to Austrian<sup>1</sup> and EU legislation.

---

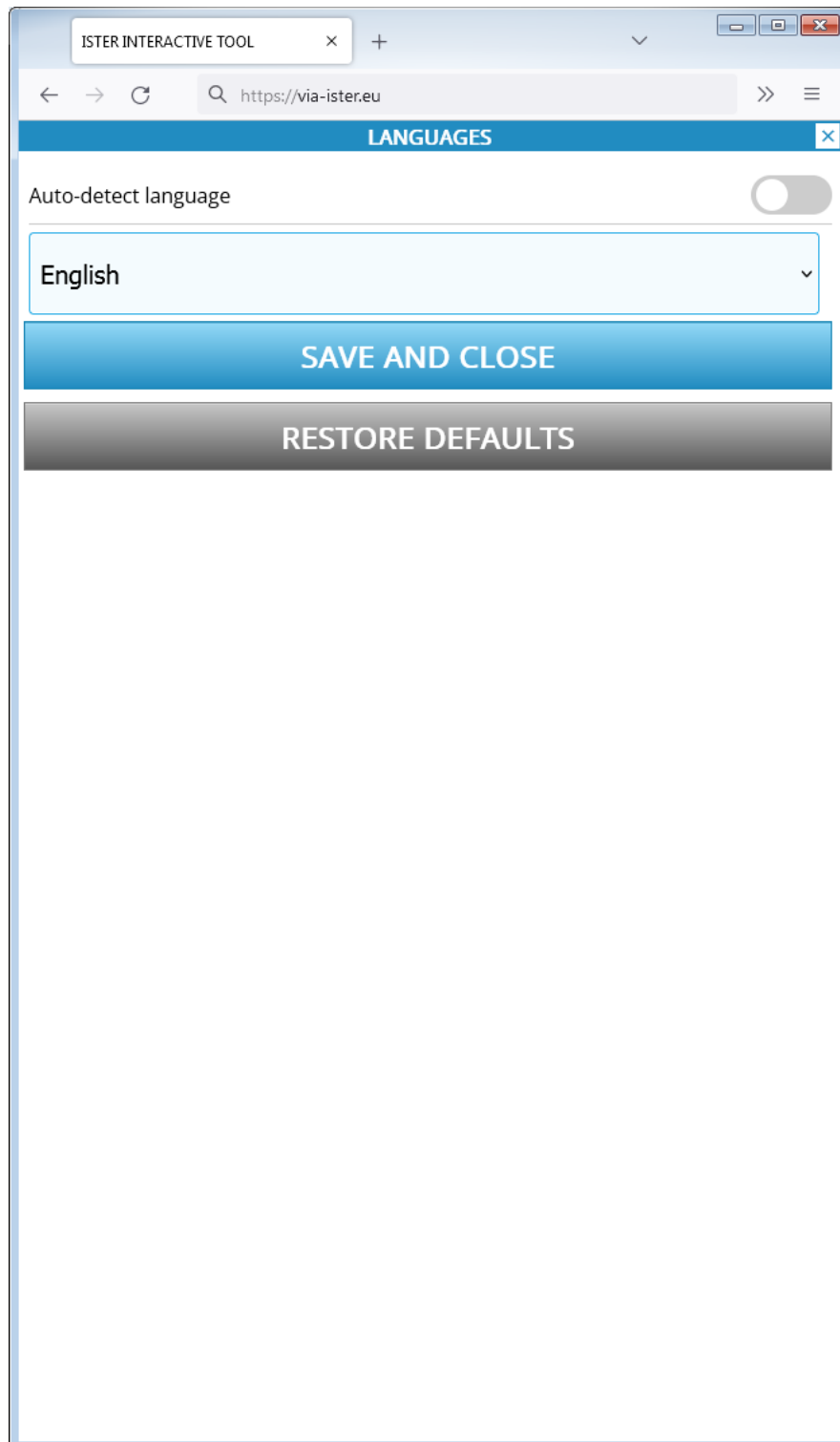
<sup>1</sup> The server hosting the Interactive Tool is located in Austria.

## Cookies

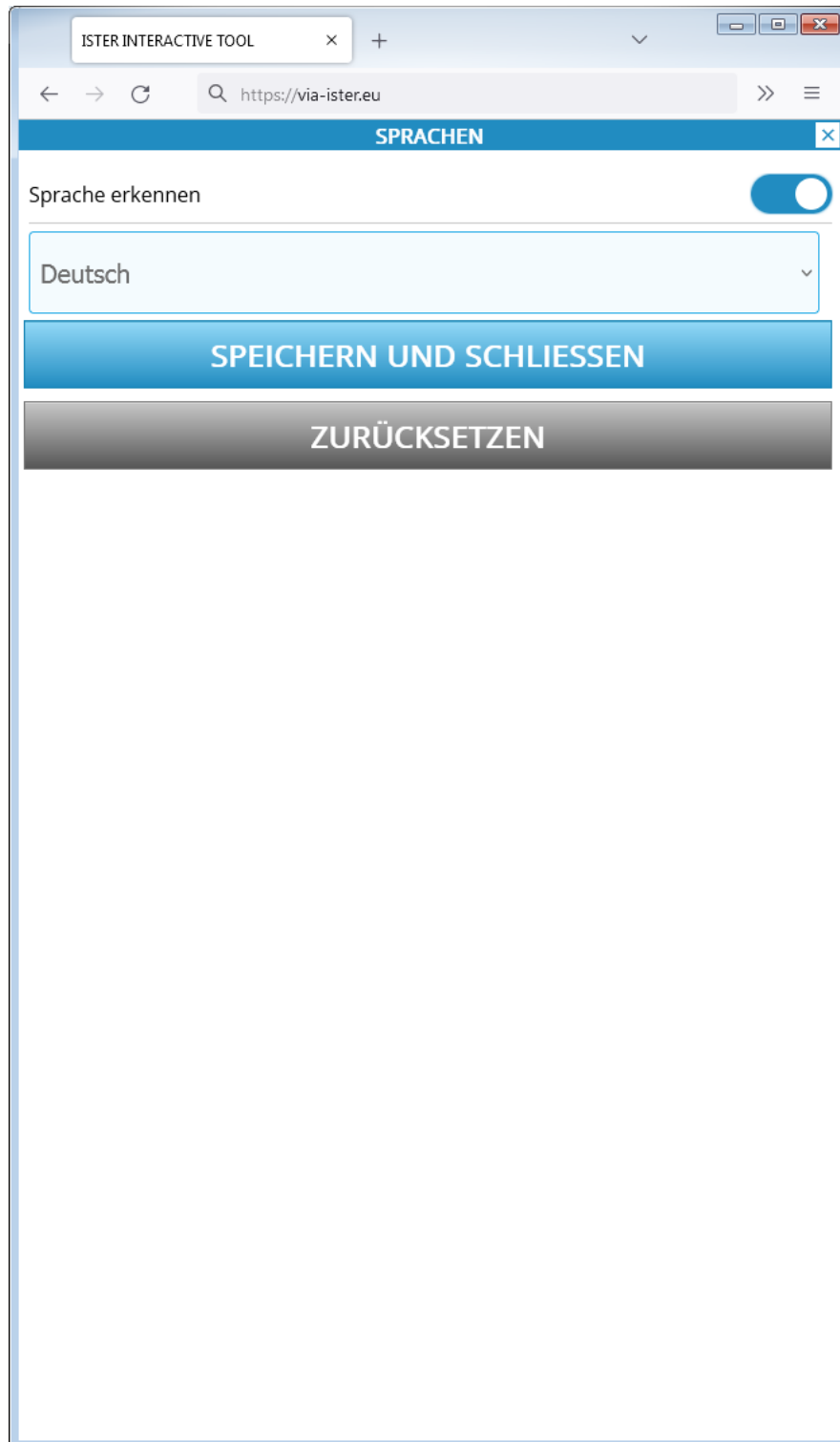


Upon your very first visit of <https://www.via-ister.eu>, the start page will be overlaid by a cookie consent window. This is mandatory for all European websites due to the European General Data Protection Regulation (GDPR). If you prefer to accept, this message will not be shown again and the position of the switches on the options page will be remembered for your further activities. If you prefer to decline, you will see the same overlay upon the next call of <https://www.via-ister.eu>. The position of all switches on the option page will be reset to default upon every call of <https://www.via-ister.eu>. The cookies consent button allows you to change your choice at any time.

## Languages



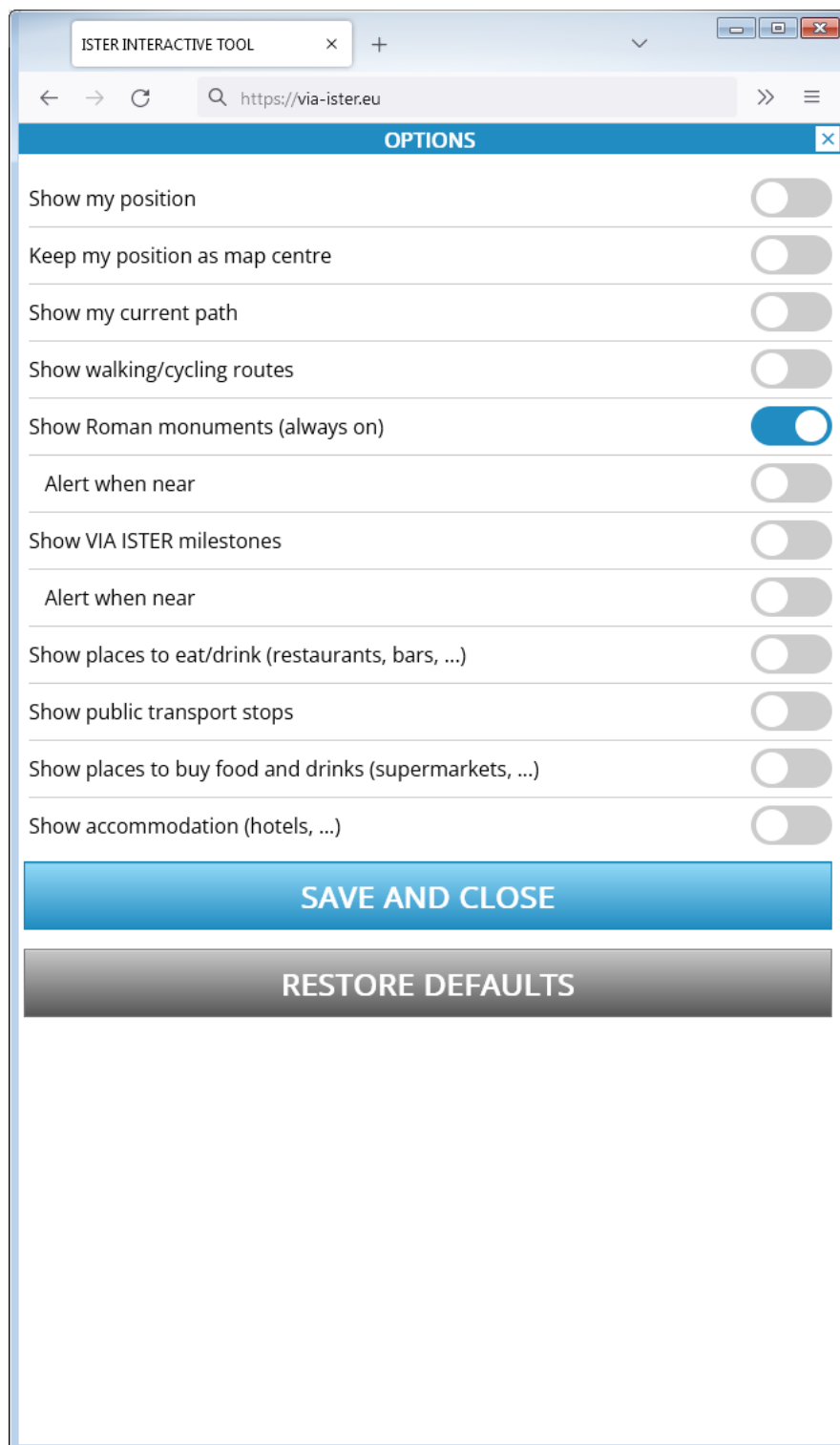
The language control panel allows you to set or auto-detect the language in which the elements of the Interactive Tool are shown to you. Each national language of the project partners is available for choice. Information on monuments and milestones are available in the respective national language and in English, however, this information is not available in other languages besides these two. The auto-detect switch recognises the language of your web browser and sets the Interactive Tool to this language if available. Each content not available in the desired language is shown in English.



Selecting a different language or activating the auto-detection mode instantly changes the language of all elements. The language drop-down is disabled whenever language auto-detection is on. To manually select a language, auto-detect must be turned off in advance.



## Options



The options control panel allows you to set multiple options which affect the way the map is working. For all location-based features you might have to allow the Interactive Tool once to access the location information of your device. This is depending on the security settings of your mobile device.

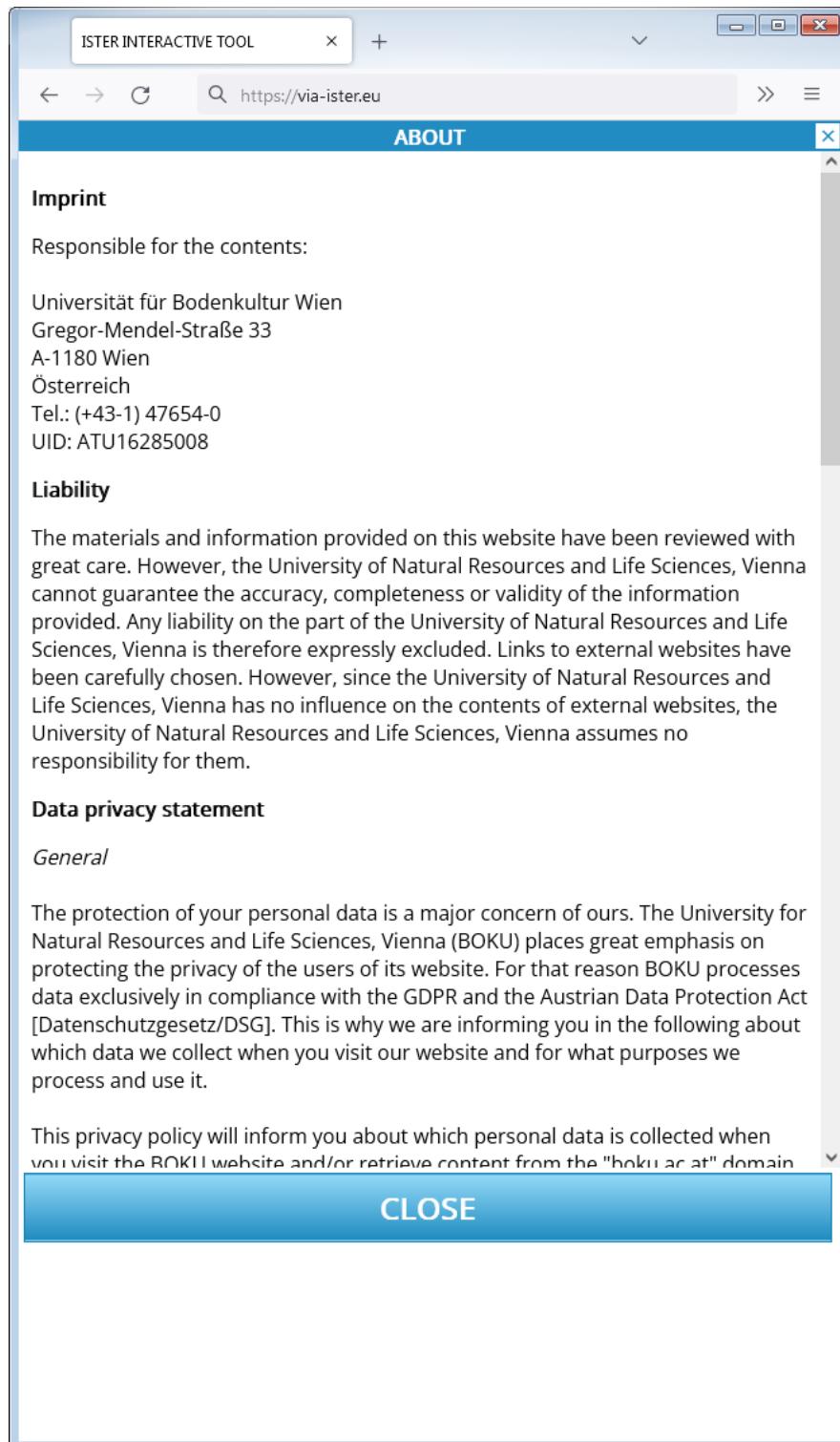
- Show my position: Your position is marked on the map with a semi-transparent blue circle. You need to have GPS switched on on your mobile device.

- Keep my position as map centre: The map will always follow your position, and your position will be the centre of the map. It is useful to have “Show my position” turned on while using this feature.
- Show my current path: The route you are walking (or hiking, cycling, driving, ...) is shown in the map as a blue line. It is useful to have “Show my position” and “Keep my position as map centre” turned on while using this feature. As long as “Show my current path” is turned on, the Interactive Tool measures the overall distance of the recorded route and calculates the average speed for approximately the last minute. All route information is stored on your device only. Not a single detail of your route or your position is sent to the Interactive Tool’s server.
- Show walking and cycling routes: This switch activates the walking and cycling routes layer in the map. Walking and cycling routes are displayed as orange lines with a white centreline.
- Show Roman monuments: This switch, lets you see the locations of Roman monuments in the map. Roman monuments are displayed as orange circles. As Roman monuments are the key element of the Interactive Tool, you cannot turn off this switch.
- Show Roman monuments/Alert when near: If this switch is turned on, an alert is triggered as soon as you come close to a Roman monument. The alert plays a short sound if the sound settings are not set to mute. It also makes your device vibrate for a short time if your device supports vibration and vibration is activated on your device. Depending on manufacturer and/or operating system, the sound or vibrate functions may not work on all devices due to restrictive security settings.
- Show VIA ISTER milestones: VIA ISTER Milestones are stone plates carrying an engraved metal plate with a QR code. These milestones are available at selected locations near Roman monuments. You may scan the QR code with the inbuilt QR code scanner of the Interactive Tool or with any other QR code scanner of your choice. If the layer is not visible although turned on, you need to zoom deeper into the map.
- Show VIA ISTER milestones /Alert when near: If this switch is turned on, an alert is triggered as soon as you come close to a VIA ISTER milestone. The alert plays a short sound if the sound settings are not set to mute. It also makes your device vibrate for a short time if your device supports vibration and vibration is activated on your device. Depending on manufacturer and/or operating system, the sound or vibrate functions may not work on all devices due to restrictive security settings.
- Show places to eat/drink (restaurants, bars, ...): This switch activates a map layer which displays restaurants and bars in the map. Single restaurants are shown with a pink fork and knife icon. Wherever these icons would overlap due to the density of restaurants or bars, they are grouped to a pink circle with the number of grouped elements shown inside the circle. To ungroup these elements, zoom deeper into the map. Also, if the layer is not visible although turned on, you need to zoom deeper into the map.
- Show public transport stops: This switch activates a map layer which displays public transport stops in the map. Single public transport stops are shown with a white square with a blue outline. Wherever these icons would overlap due to the density of public transport stops, they are grouped to a blue square with the number of grouped elements shown inside the circle. To ungroup these elements, zoom deeper into the map. Also, if the layer is not visible although turned on, you need to zoom deeper into the map.
- Show places to buy food and drinks: This switch activates a map layer which displays places to buy food and drinks in the map. Single places to buy food and drinks are shown with a brown shopping cart icon. Wherever these icons would overlap due to the density of places

to buy food and drinks, they are grouped to a brown circle with the number of grouped elements show inside the circle. To ungroup these elements, zoom deeper into the map. Also, if the layer is not visible although turned on, you need to zoom deeper into the map.

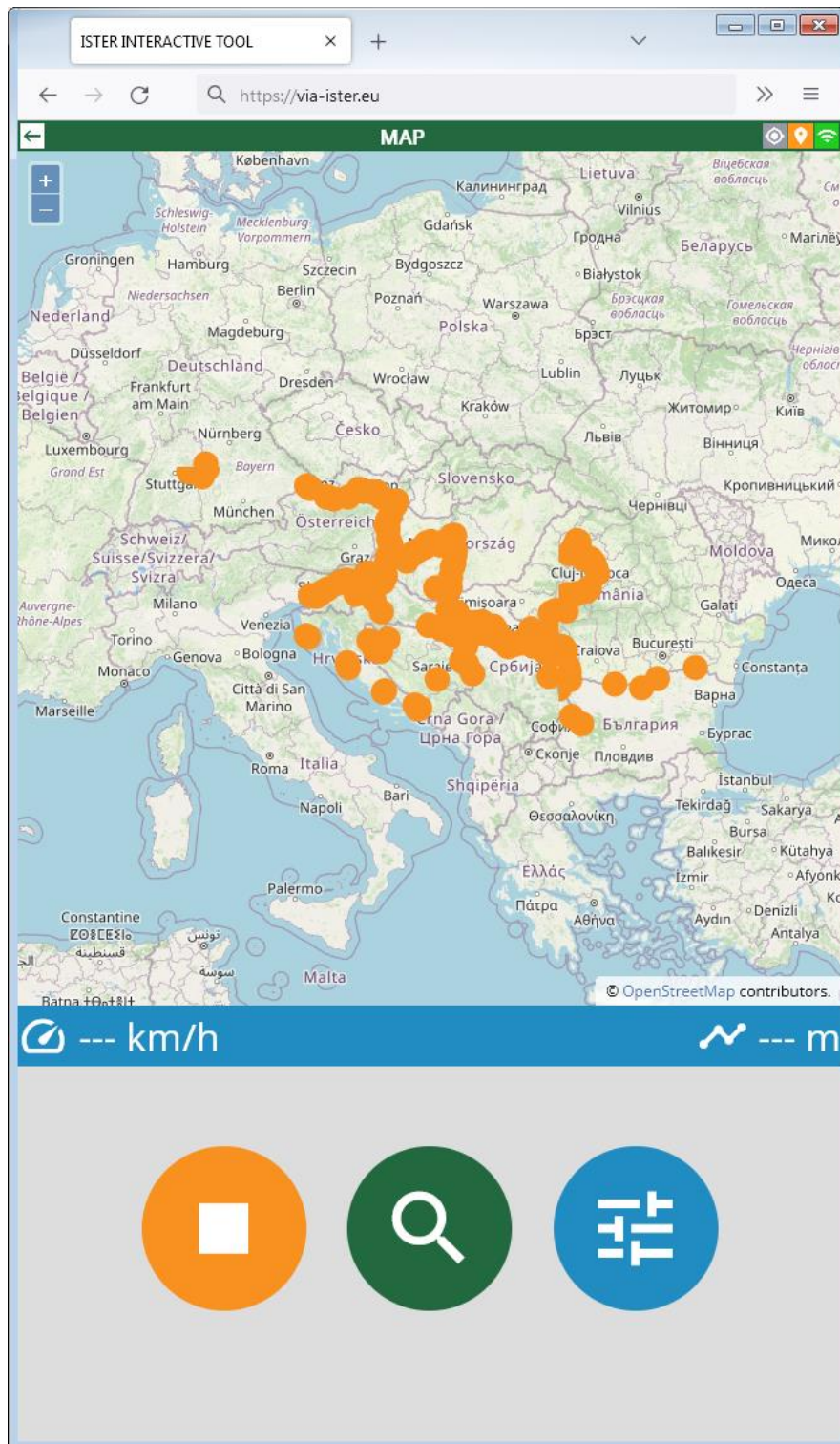
- Show accommodation (hotels, ...): This switch activates a map layer which accommodation locations in the map. Single places to buy food and drinks are shown with a purple bed icon. Wherever these icons would overlap due to the density of accommodation locations, they are grouped to a purple circle with the number of grouped elements show inside the circle. To ungroup these elements, zoom deeper into the map. Also, if the layer is not visible although turned on, you need to zoom deeper into the map.

## About



The about page shows necessary and/or mandatory information due to Austrian and EU legislation: Imprint, Liability, Data Privacy Statement, Cookies, Right to information, rectification, erasure or restriction; Right to object; Possibilities to lodge a complaint with the Data Protection Authority, Disclaimer for Links to external websites (external links), Contact Details.

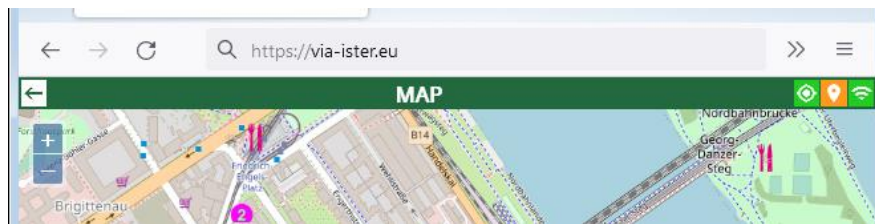
Map



The map is the central element of the Interactive Tool. The map view is vertically divided into four sections (seen from the top to the bottom):

1. Title bar
2. Map view
3. Tracking bar
4. Buttons

The **title bar** has a “Back” icon on the left. Tap this icon at any time to return to the start page.



There are three icons on the right hand side of the title bar:

1. Positioning icon
2. GPS icon
3. Internet connection icon

The positioning icon is green as long as the option “Keep my position as map centre” (see Options section) is turned on. It is grey when this option is turned off. You may also turn on and off the “Keep my position as map centre” function by tapping this icon.

The GPS icon shows the current quality of your GPS location information:

- Grey: no location information available
- Red: location information available, quality: poor
- Orange: location information available, quality: weak
- Yellow: location information available, quality: average
- Green: location information available, quality: good

The internet connection icon shows the current quality of your internet connection:

- Red: No internet connection
- Orange: Weak internet connection
- Green: Good internet connection

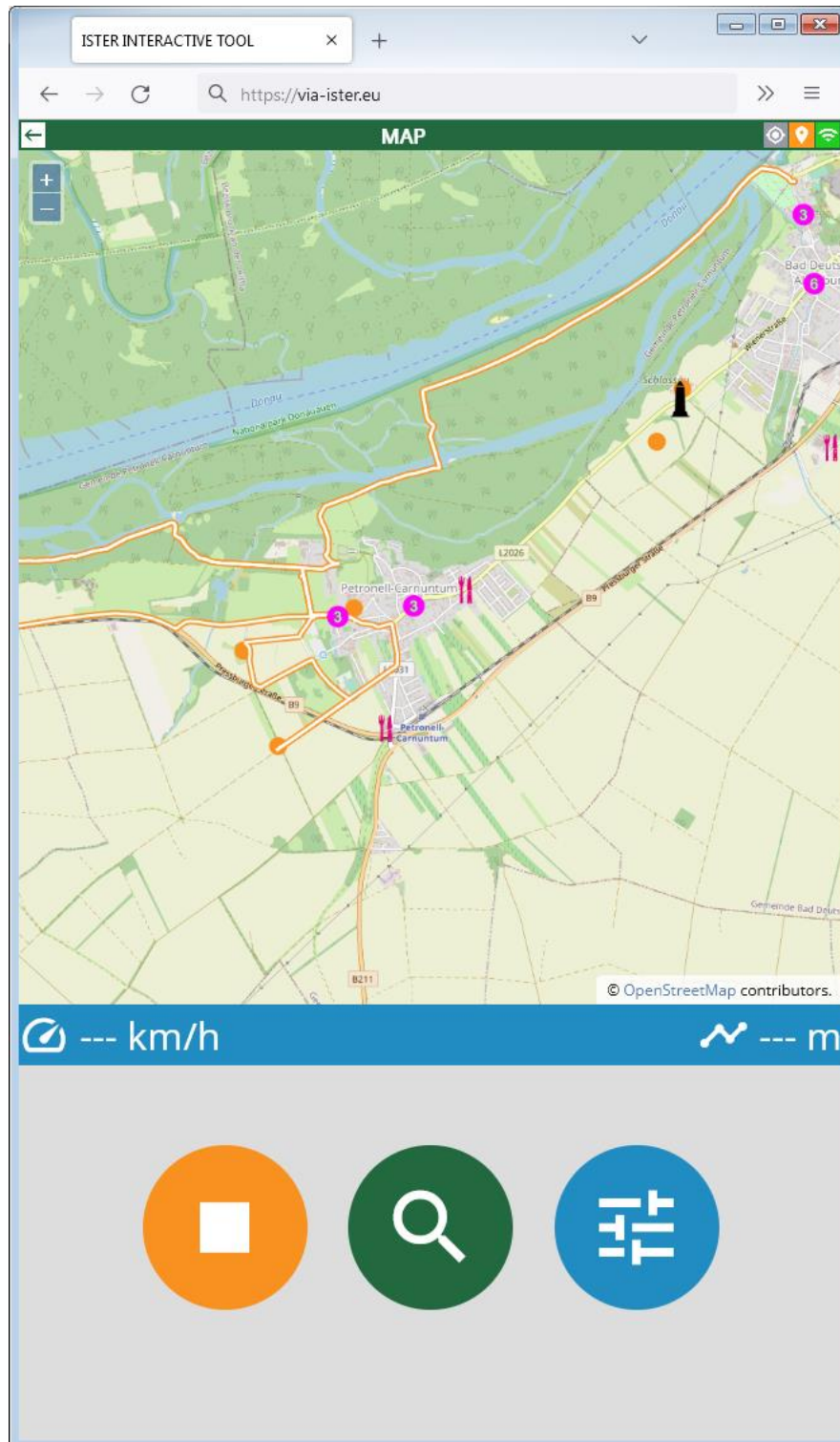
**The map view** is a combination of a background map (Open Street Map) and various thematic layers which can be turned on and off through the options control panel. Use the map like any other map application:

- Move around with one finger (make sure that “Keep my position as map centre” is turned off, otherwise the map will always jump back to its original position).
- Zoom in and out with two fingers or use the “+” and “-” buttons in the top left corner of the map view.

**The tracking bar** shows useful information connected with the status of the option “Show my current path”. As long as “Show my current path” is turned on, the Interactive Tool measures the overall distance of the recorded route and calculates the average speed for approximately the last minute. All route information is stored on your device only. Not a single detail of your route or your position is sent to the Interactive Tool’s server.

**The buttons** in the bottom section have the following functions:

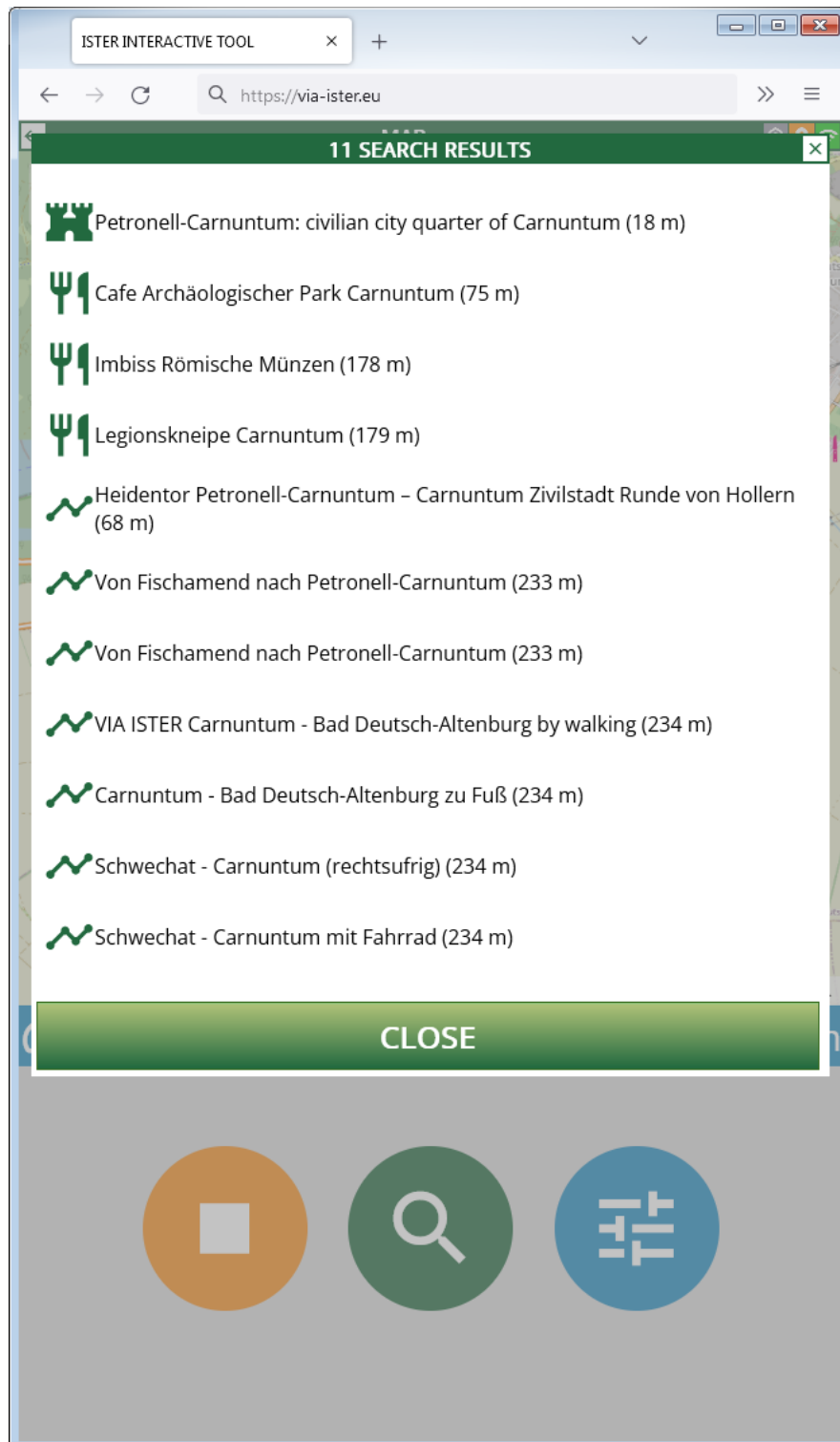
1. Stop button: Stops the map view and returns to the start page.
2. Search button: Opens the monument search.
3. Options button: Shortcut to the options control panel, for example to switch map layers on and off.



This is an example of a map view near the historical Roman site of Carnuntum in Lower Austria. These layers are turned on:

- monuments (orange circles, this layer is always on)
- milestones (black obelisk icons)
- places to eat and drink (pink map symbols)
- routes (orange lines with white centre)

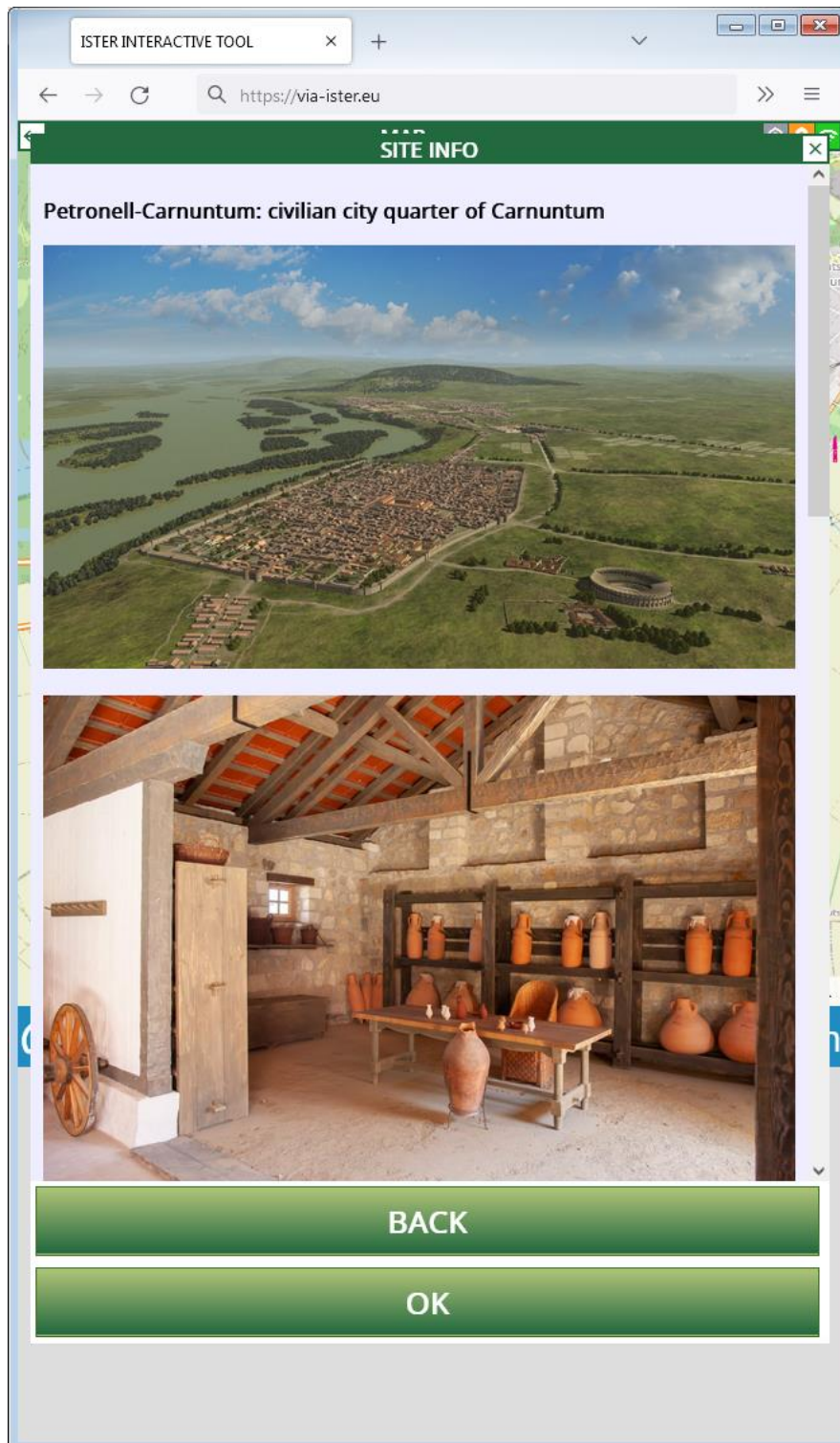
If you tap on the map, the position of your finger on the map is sent to the server and all visible layers are queried for objects near your tapping position. The search results are displayed like so:



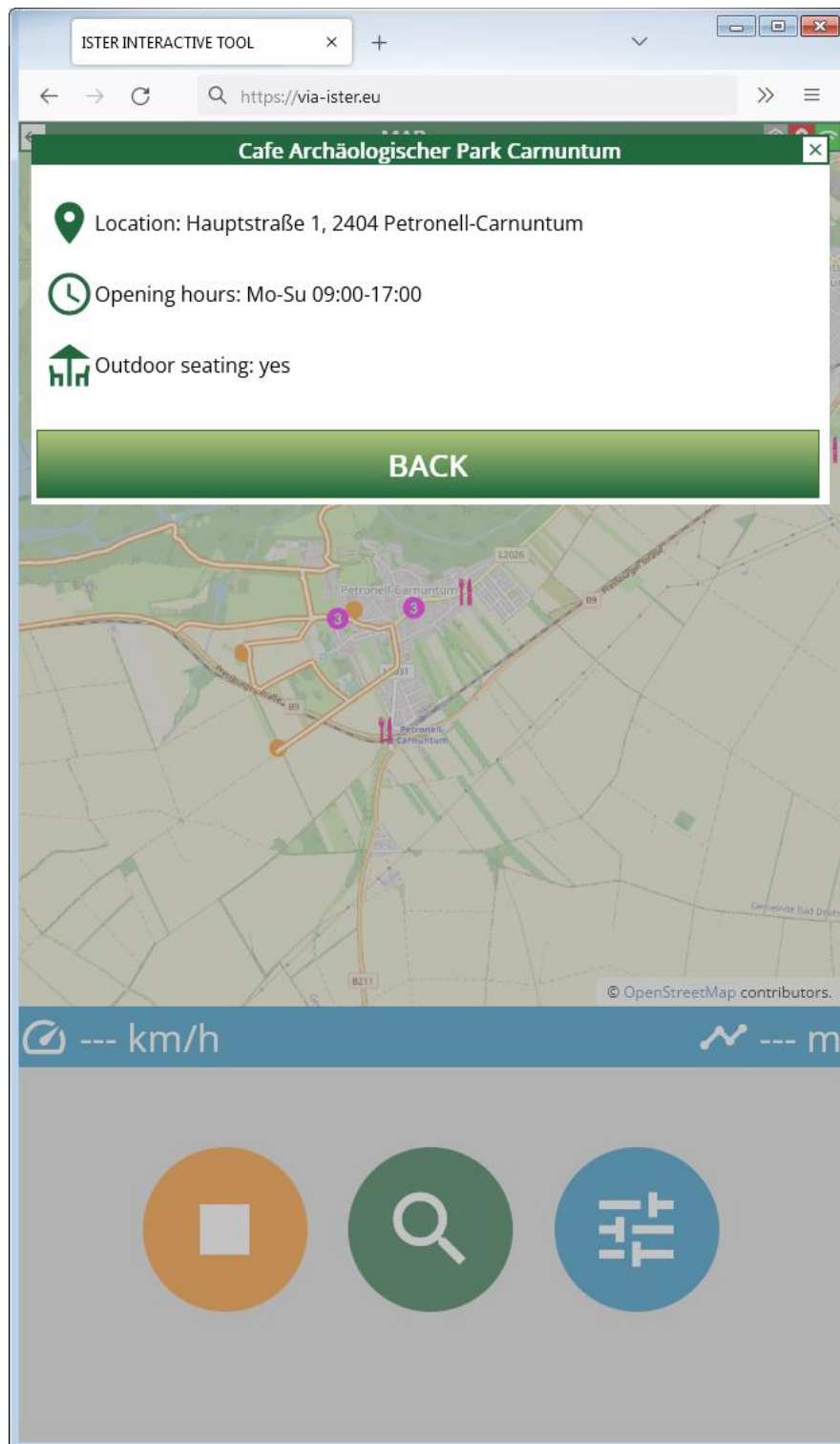
Next to each search result the distance to the position of your finger on the map is shown. Tap on any line to see detailed information (see next chapter "Site Info Details").



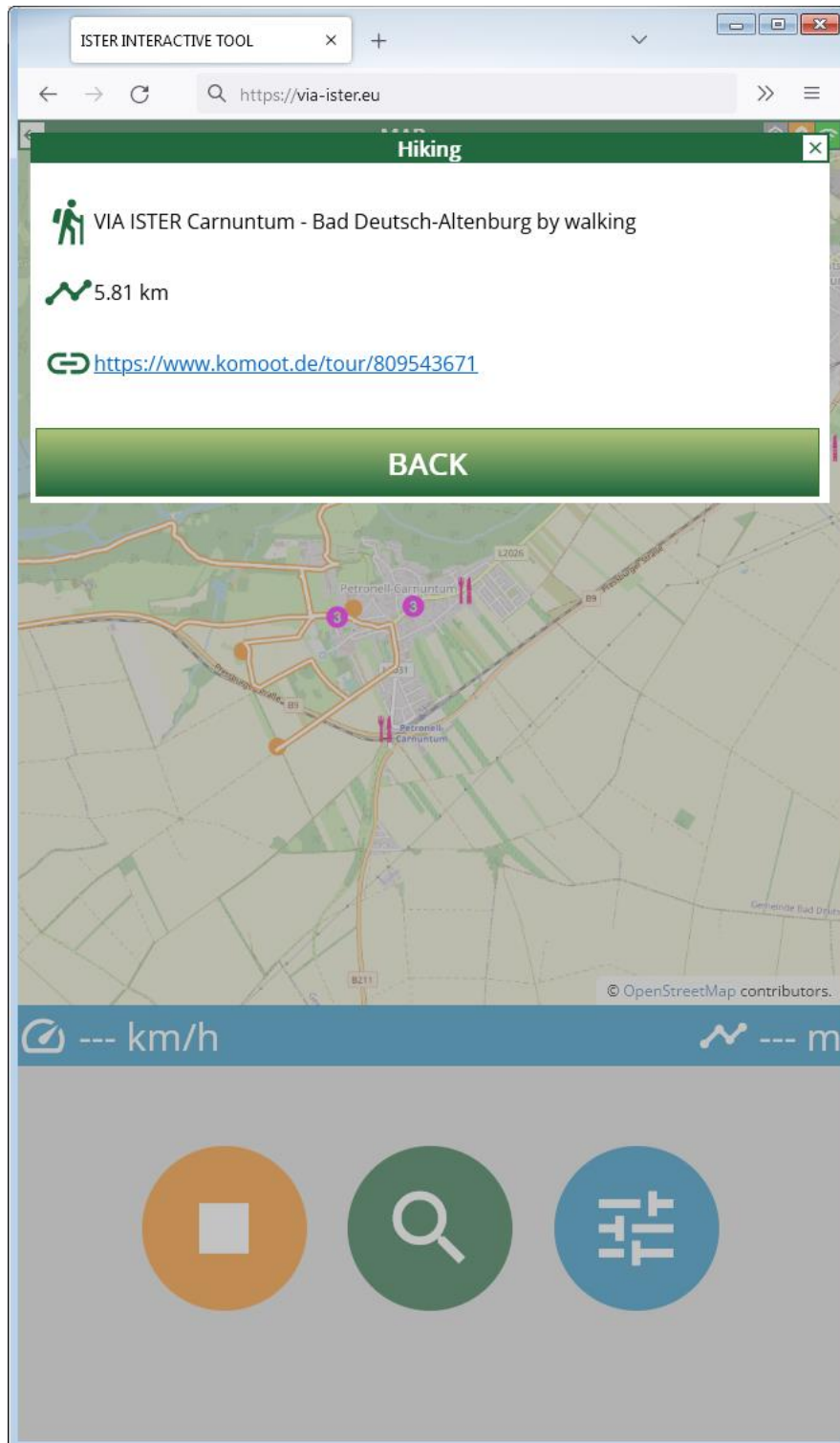
## Site Info Details



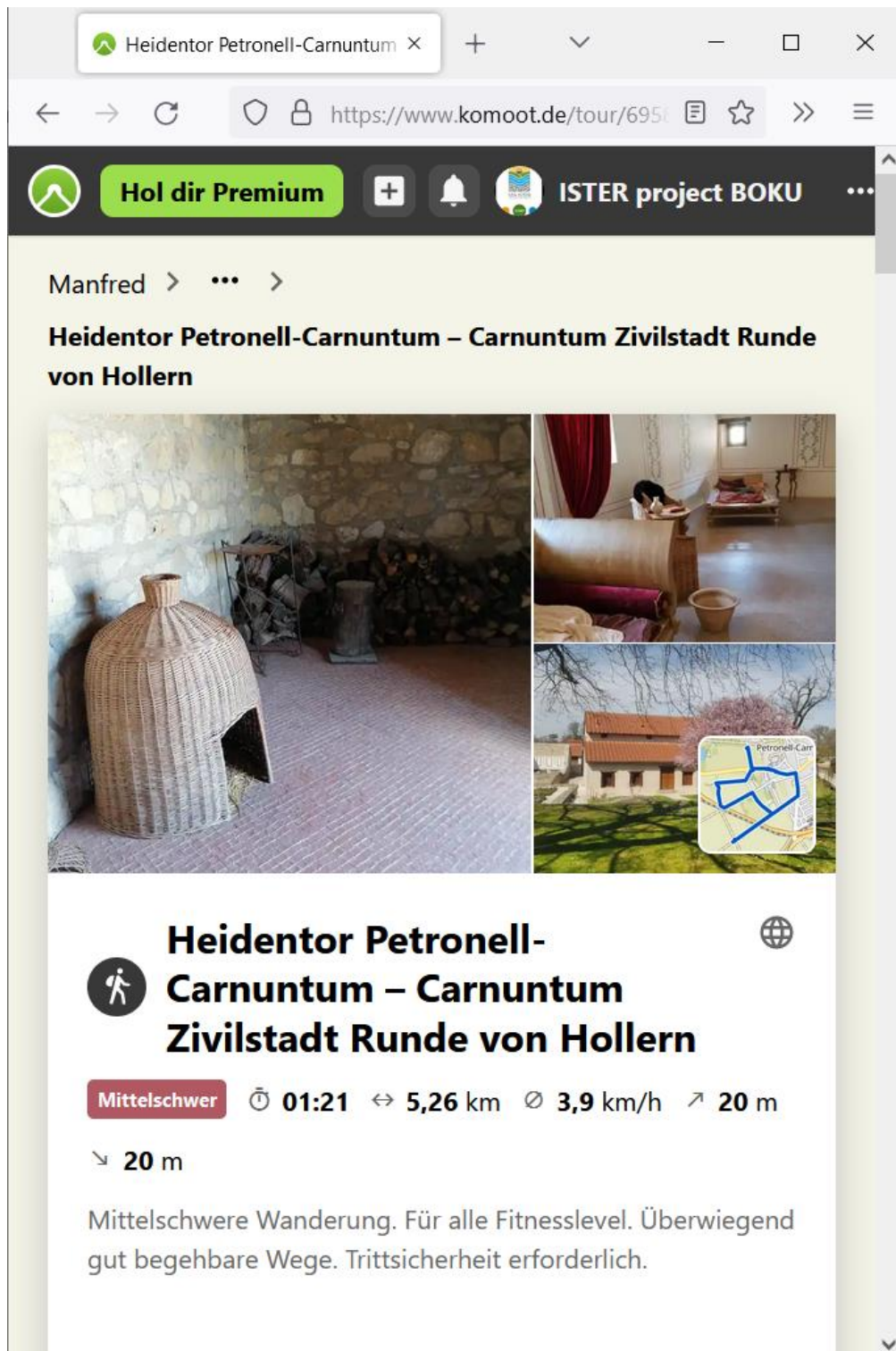
This is an example for Site Info for a Roman monument. Site info contains a headline and images (if available) as well as a short description in English and the respective national language (dependent on the language settings of the Interactive Tool). Tap on any photo for a full screen view (and tap on the full screen view to return to the site info).



This is an example for Site Info for a non-monument layer (in this case: places to eat and drink). There are plenty of possibilities to enter information for any place or site in the Open Street Map database (which is done by a worldwide user community). Usually, not each single possibility is used. All available data are shown in the site info details.

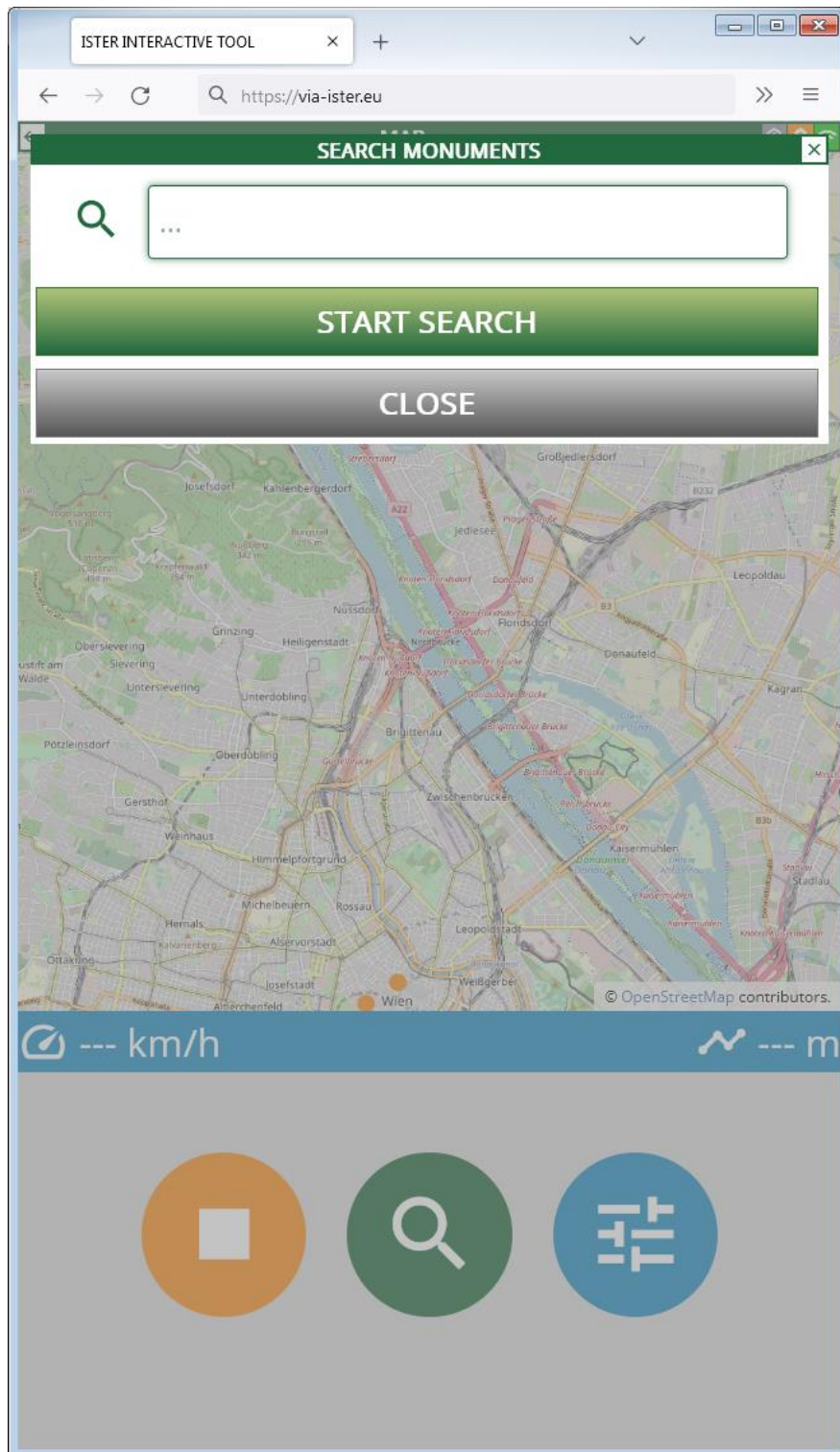


This is an example for a Site info from the “Walking and Cycling Routes” layer. Each walking and cycling route is connected with a dataset in the free-to-use leisure routing application Komoot ([www.komoot.com](http://www.komoot.com)). For best use of the provided links, we recommend to create a free Komoot account.



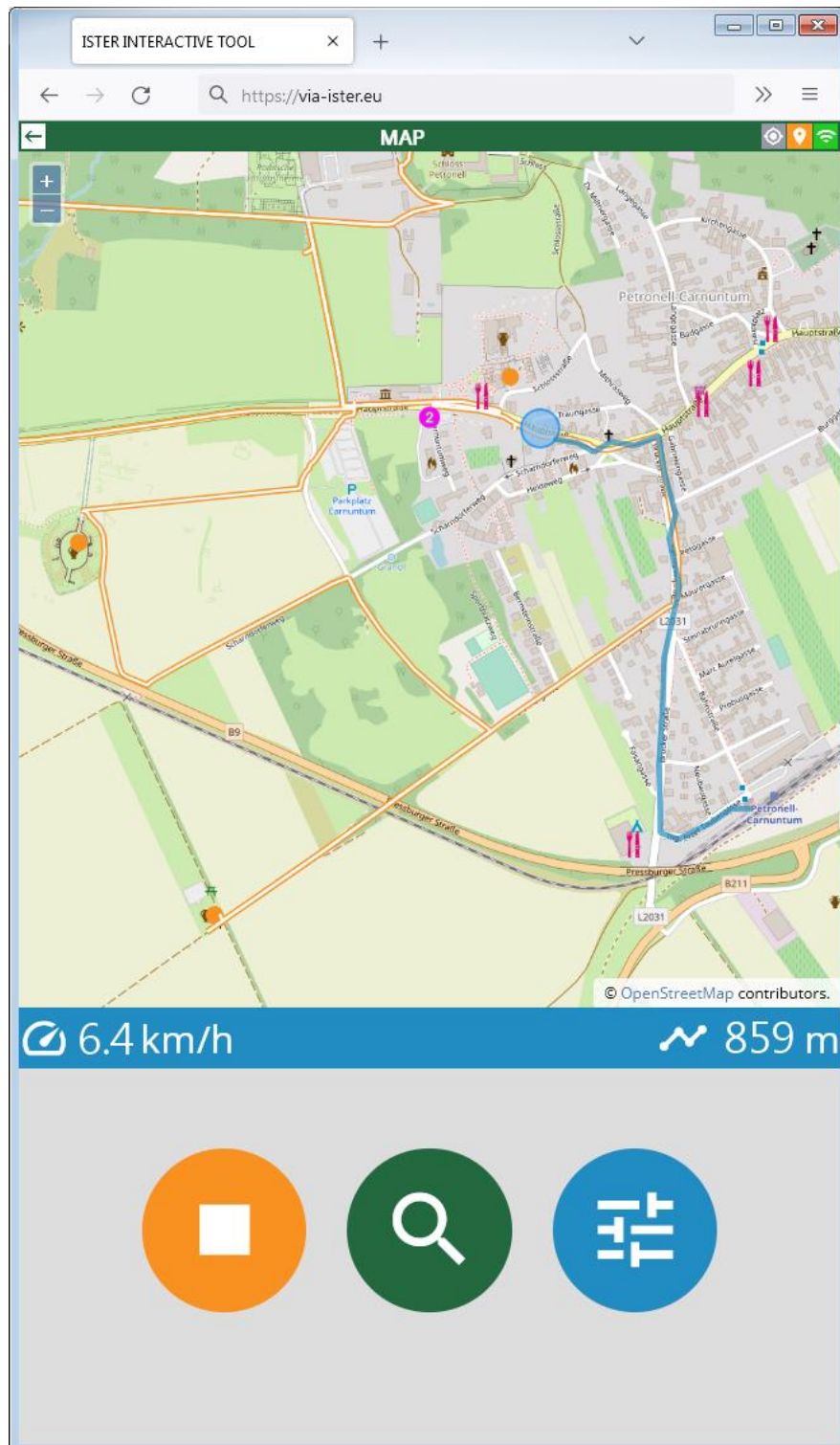
This is what it will look like when you open one of the provided Komoot links. The route can be seen on a map, and lots of route information (duration, length, height profile, path conditions) including explanatory text and photos are provided.

## Search



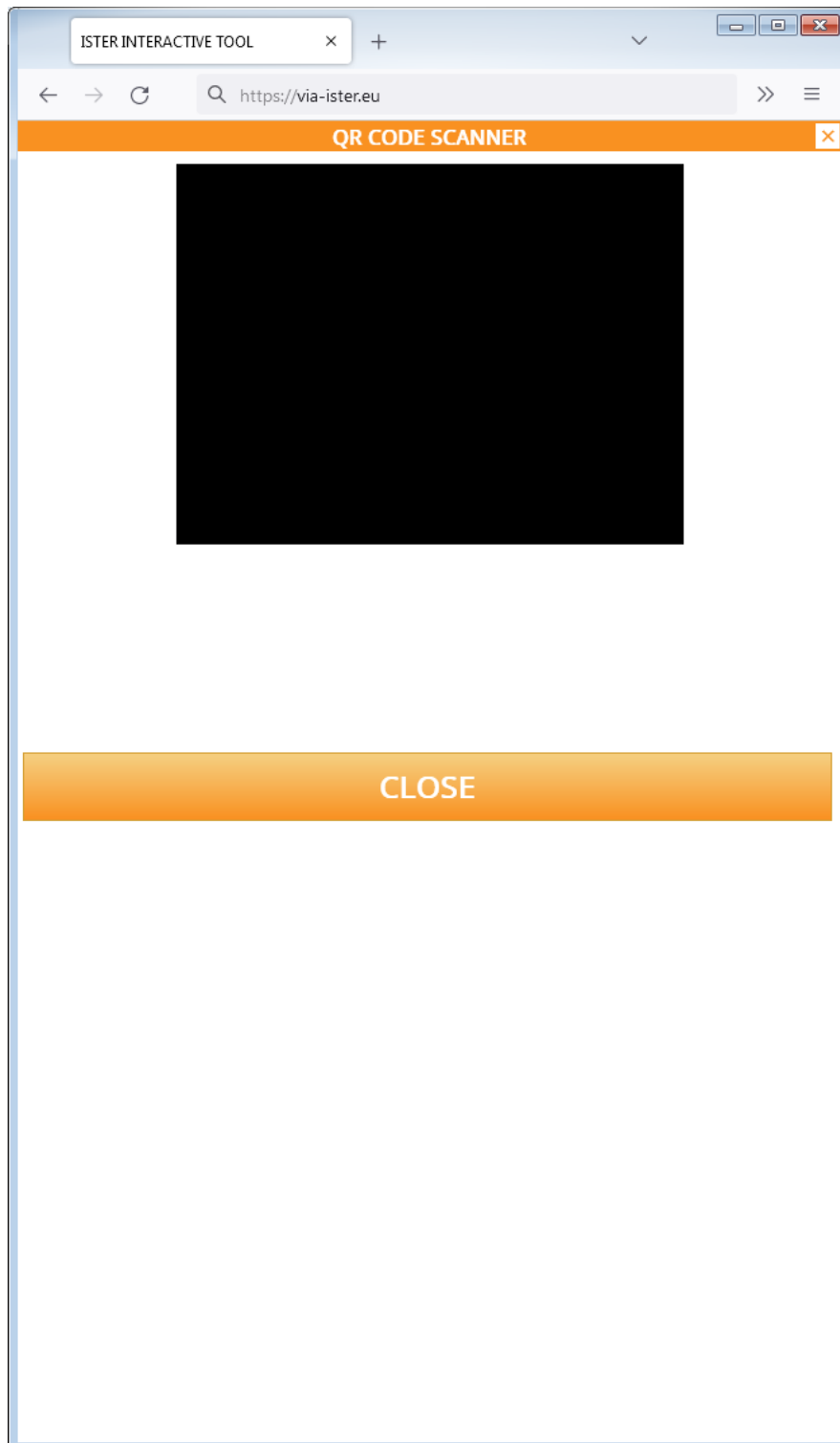
The search engine allows for a simple full text search within the monuments. Enter a search term and press **START SEARCH**. The matching monuments are then displayed on your screen in the same way as when queried from the map.

## Tracking



To use the tracking features, you need to turn on “Show my current path” from the options control panel. We also recommend to turn on “Show my position” and “Keep my position as map centre” for best experience. As long as “Show my current path” is turned on, the Interactive Tool measures the overall distance of the recorded route and calculates the average speed for approximately the last minute.

## QR Code Reader

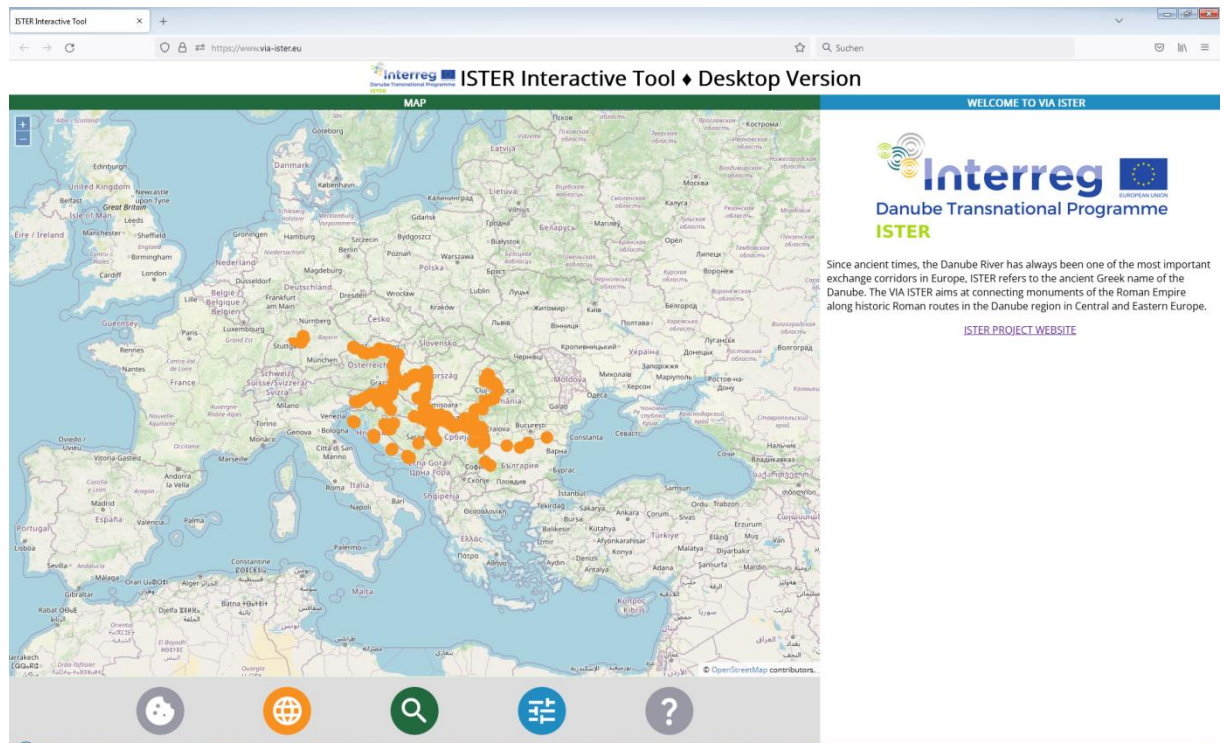


The QR code reader allows you to scan QR codes from VIA ISTER milestones. Depending on the security settings of your device, it might be necessary to grant allowance for the Interactive Tool to use your device's camera. Hold the camera onto the QR code, the code will be scanned and you will get information on the location of the milestone. The map will also centre to the location of the milestone. You cannot scan other QR codes than VIA ISTER milestone ones with this QR code reader.

## Desktop Version

### Site structure

The desktop version makes use of the larger size of your screen. While the mobile version is working with overlays to display information, all information in the desktop version can be displayed next to each other. The screen is divided into four sections:



1. Top: Title bar
2. Left: Map view
3. Right: Text view
4. Bottom: Button bar

### Title bar

The title bar comes with the ISTER project logo and title “ISTER Interactive Tool •Desktop Version”.

### Map view

The map view is a combination of a background map (Open Street Map) and various thematic layers which can be turned on and off through the options control panel. Use the map like any other map application:

- Move around with the left mouse button pressed.
- Zoom in and out with the mouse wheel or use the “+” and “-“ buttons in the top left corner of the map view.
- Click on the map to retrieve information for the position of your click.

### Text view

The text view is showing a short introductory text when opening <https://www.via-ister.eu>. In this section you will see all output from the Interactive Tool like search results, site information, language and options selection.

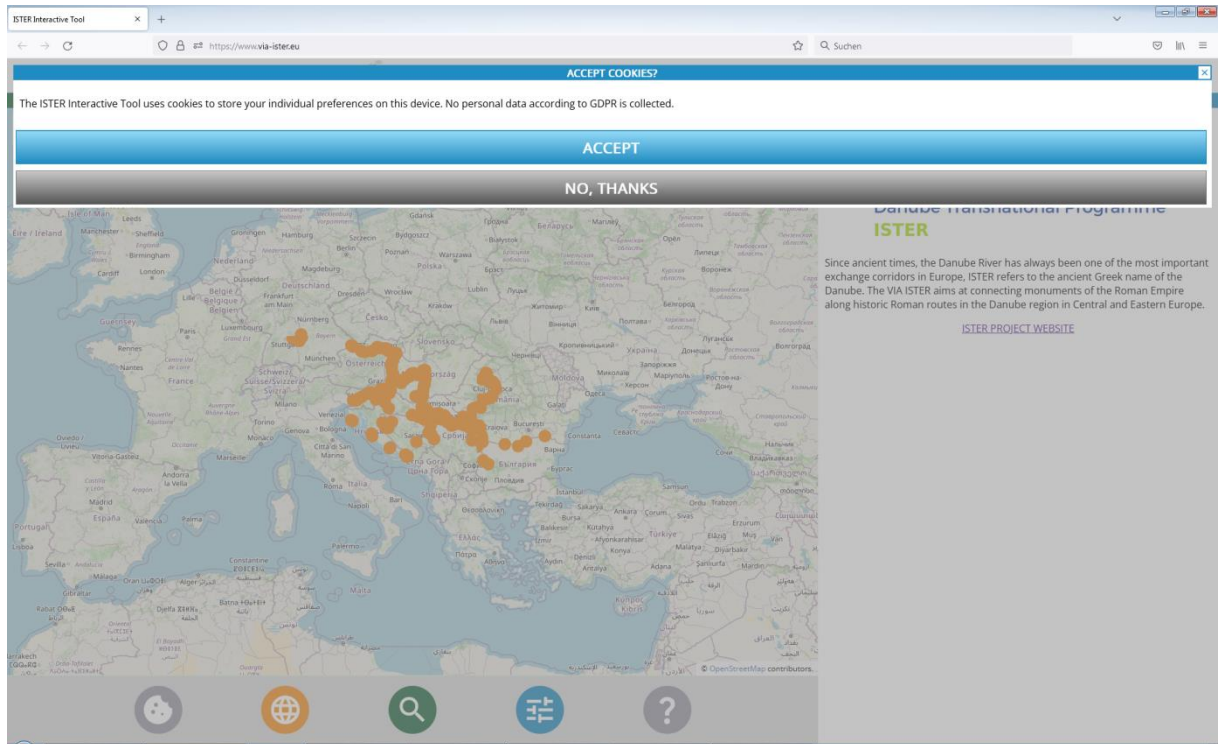


## Button bar

The button bar has five buttons:

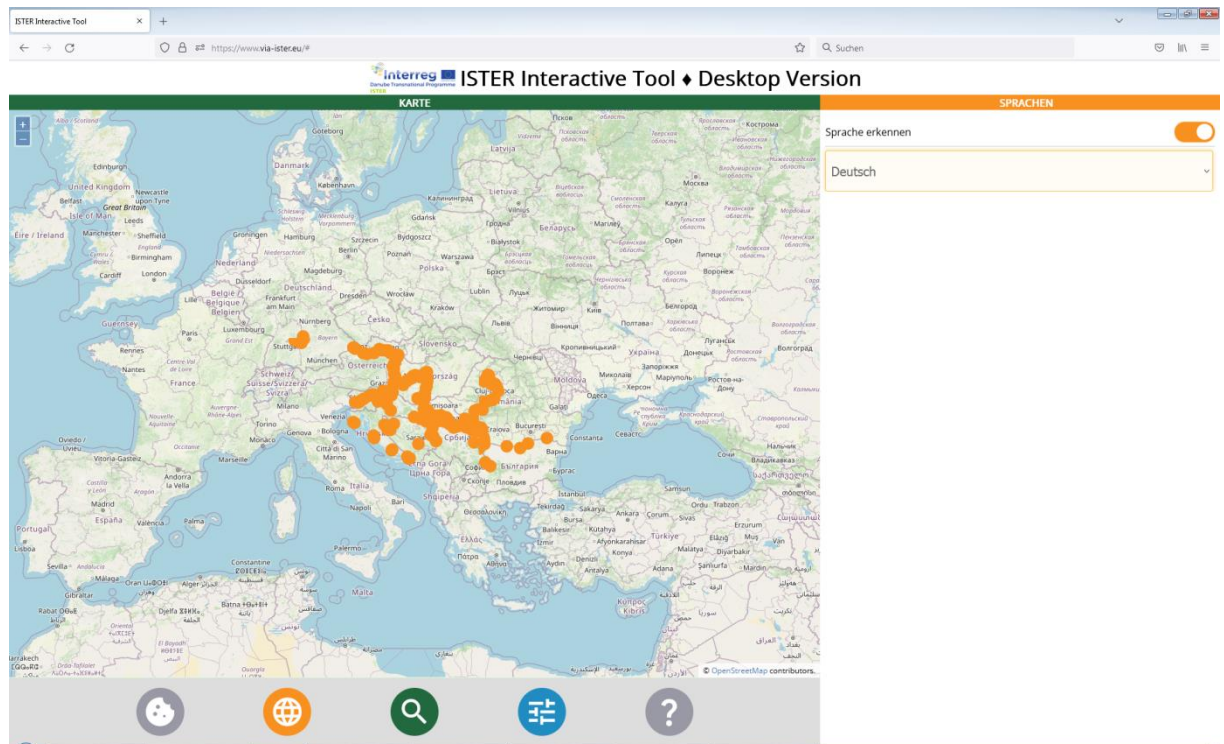
1. **Cookie consent button:** The cookies consent button allows you to change the cookie consent at any time. The initial value of the cookie consent is set upon your first visit of <https://www.via-ister.eu>.
2. **Language button:** The language button shows the language control panel. It allows you to set or auto-detect the language in which the elements of the Interactive Tool are shown to you. Each national language of the project partners is available for choice. Information on monuments and milestones are available in the respective national language and in English, however, these information is not available in other languages besides these two.
3. **Search button:** Opens the monument search.
4. **Options button:** The options page view shows a lot of useful settings, like the layers visible on the map or other switches to toggle the functionality of the Interactive Tool.
5. **The about button** shows the imprint of the website including all necessary and/or mandatory statements according to Austrian and EU legislation.

## Cookies



Upon your very first visit of <https://www.via-ister.eu>, the start page will be overlaid by a cookie consent window. This is mandatory for all European websites due to the European General Data Protection Regulation (GDPR). If you prefer to accept, this message will not be shown again and the position of the switches on the options page will be remembered for your further activities. If you prefer to decline, you will see the same overlay upon the next call of <https://www.via-ister.eu>. The position of all switches on the option page will be reset to default upon every call of <https://www.via-ister.eu>. The cookies consent button allows you to change your choice at any time.

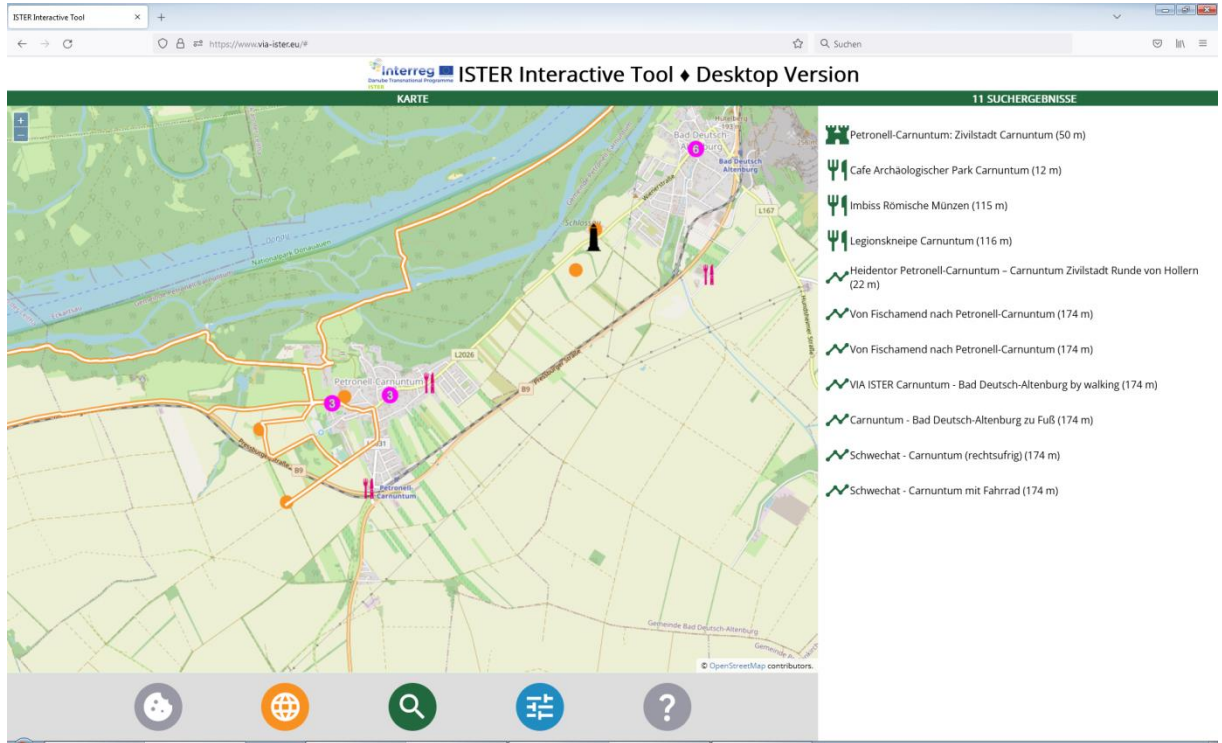
## Languages



The language control panel allows you to set or auto-detect the language in which the elements of the Interactive Tool are shown to you. Each national language of the project partners is available for choice. Information on monuments and milestones are available in the respective national language and in English, however, these information is not available in other languages besides these two. The auto-detect switch recognises the language of your web browser and sets the Interactive Tool to this language if available. Each content not available in the desired language is shown in English.

## Map query

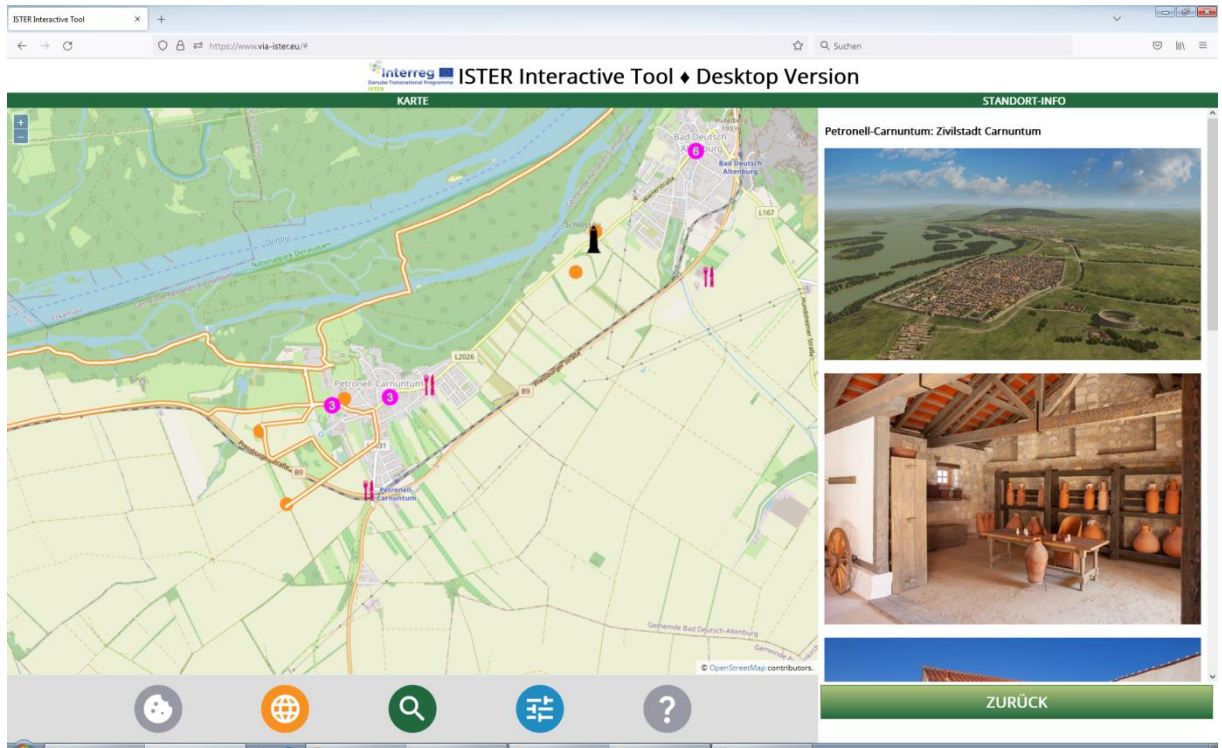
If you click on the map (left mouse button), the position of your finger on the map is sent to the server and all visible layers are queried for objects near your tapping position. The search results are displayed like so:



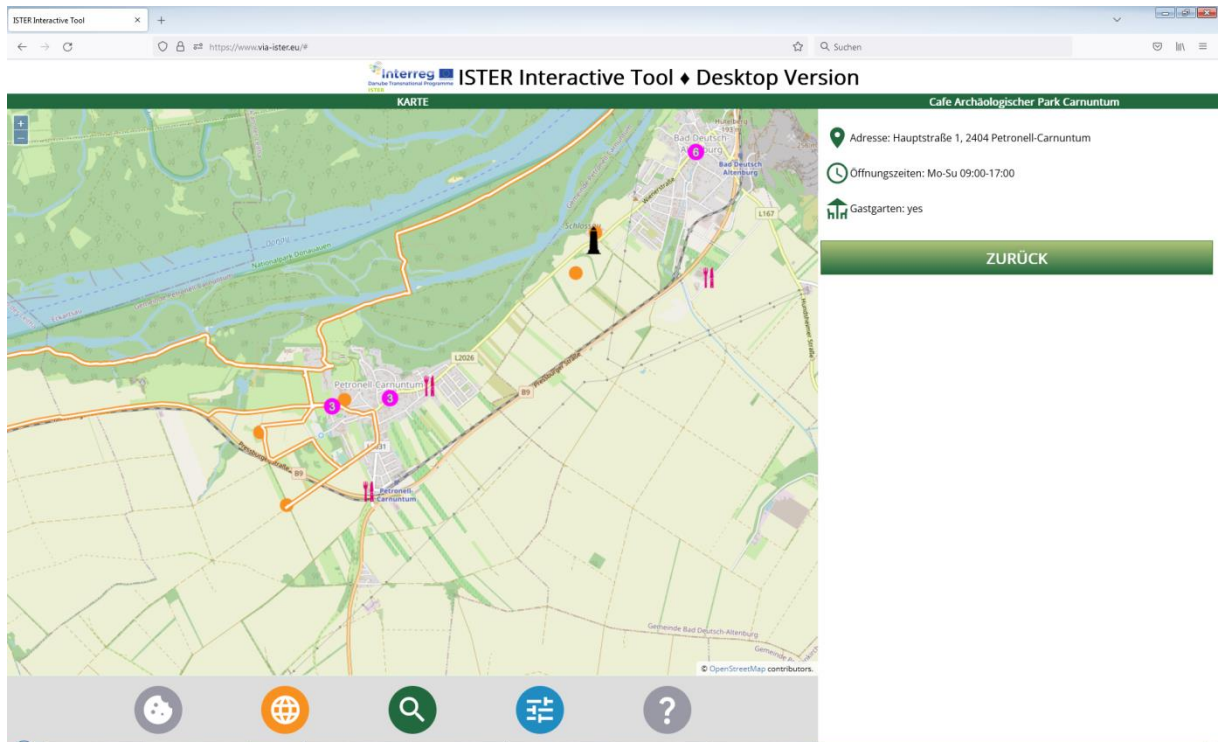
Next to each search result the distance to the position of your finger on the map is shown. Click on any line to see detailed information (see next chapter "Site Info Details").

## Site Info Details

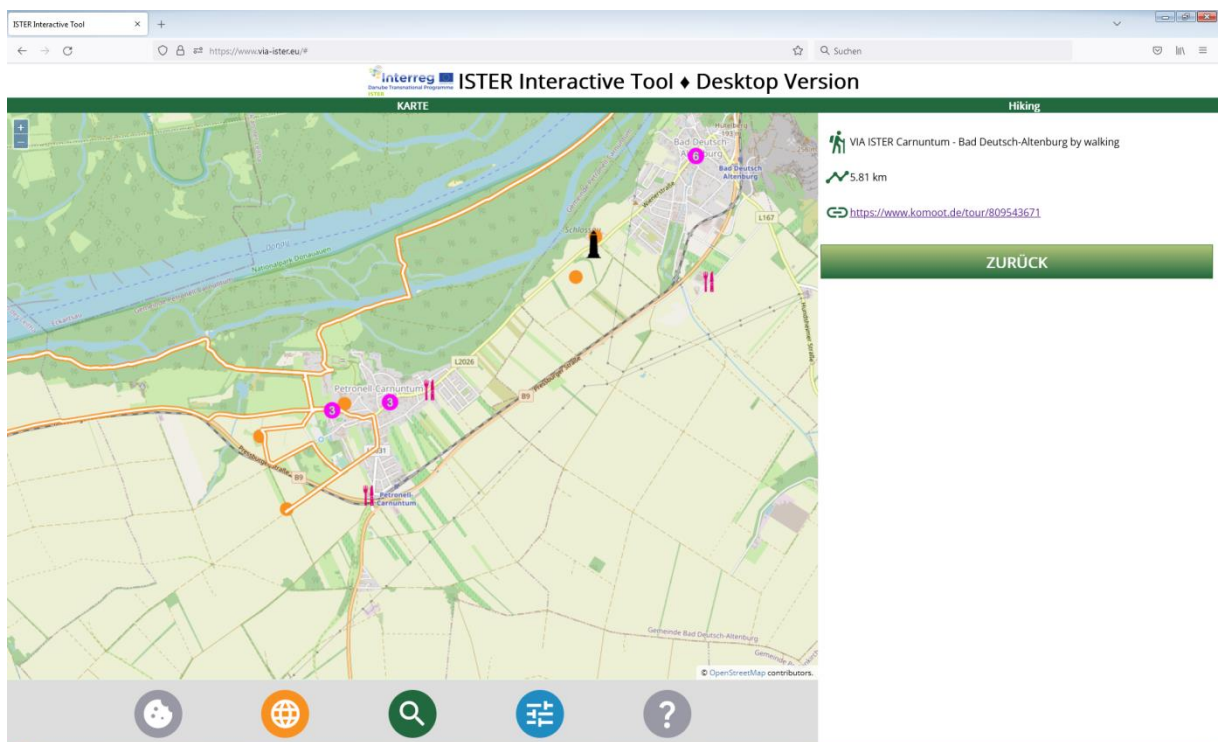
If you click on the map (left mouse button), the position of your finger on the map is sent to the server and all visible layers are queried for objects near your tapping position. The search results are displayed like so:



This is an example for Site Info for a Roman monument. Site info contains a headline and images (if available) as well as a short description in English and the respective national language (dependent on the language settings of the Interactive Tool). Tap on any photo for a full screen view (and tap on the full screen view to return to the site info).

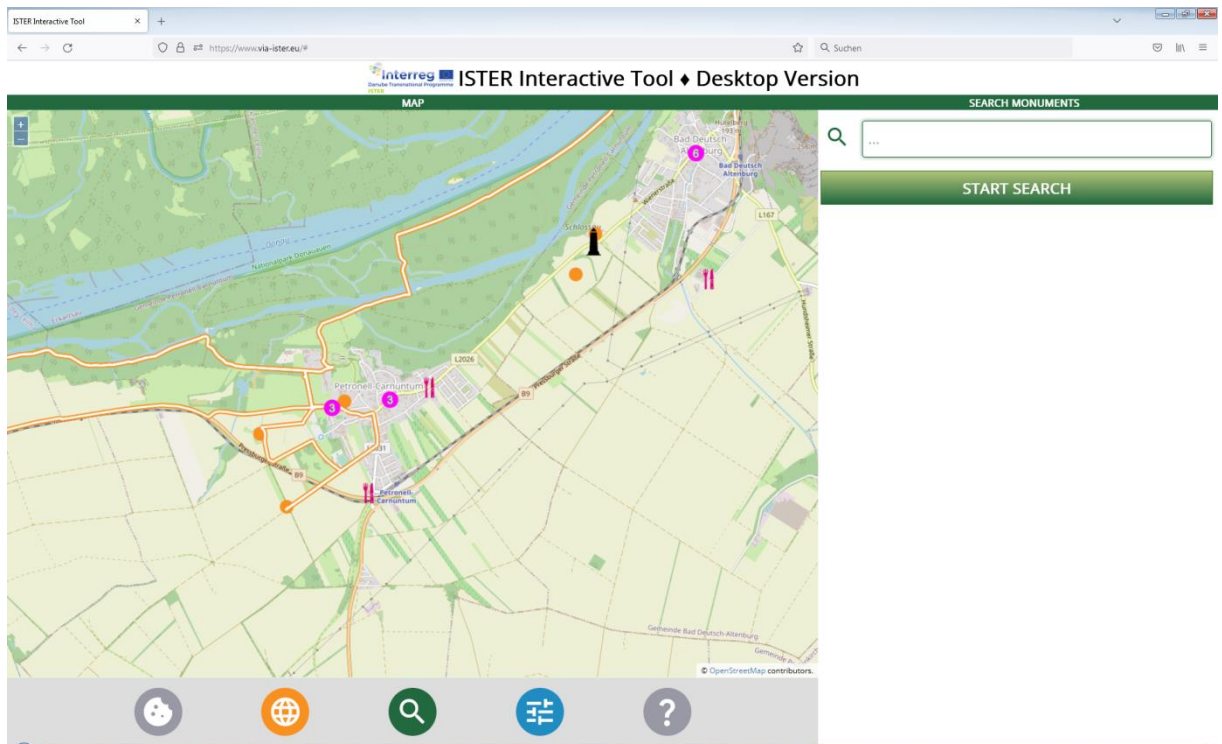


This is an example for Site Info for a non-monument layer (in this case: places to eat and drink). There are plenty of possibilities to enter information for any place or site in the Open Street Map database (which is done by a worldwide user community). Usually, not each single possibility is used. All available data are shown in the site info details.



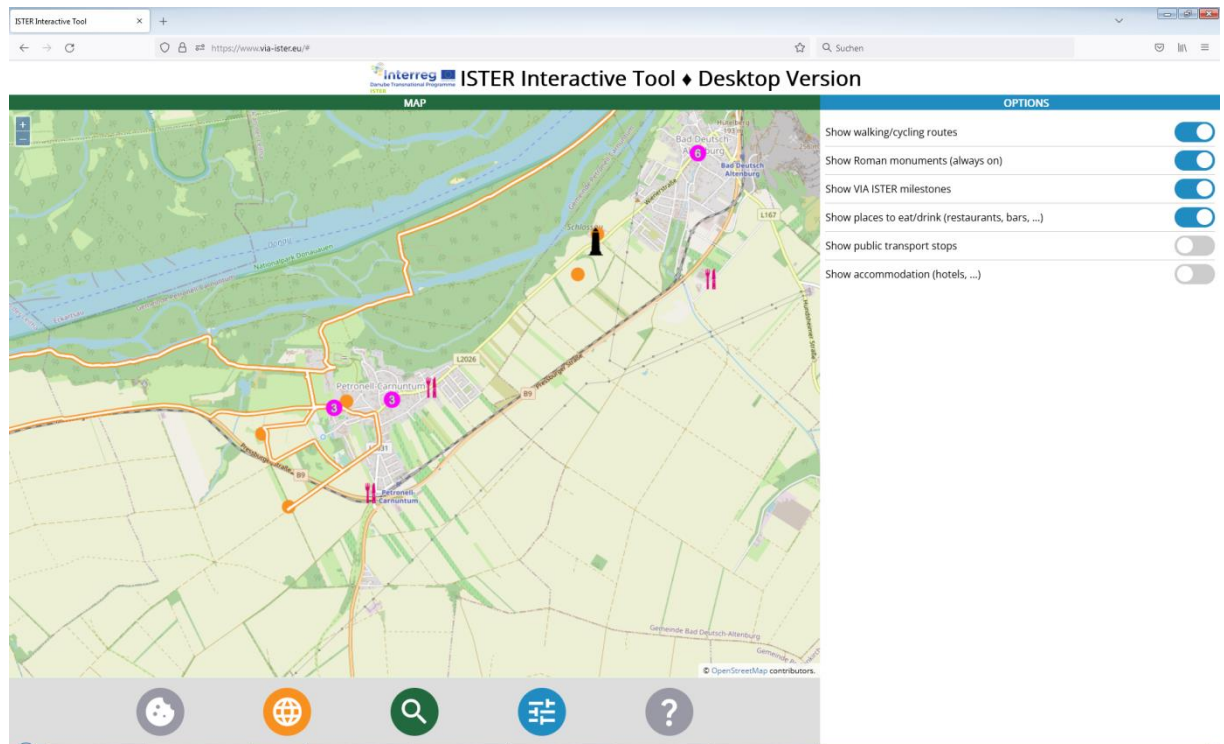
This is an example for a Site info from the “Walking and Cycling Routes” layer. Each walking and cycling route is connected with a dataset in the free-to-use leisure routing application Komoot ([www.komoot.com](http://www.komoot.com)). For best use of the provided links, we recommend to create a free Komoot account.

## Search



The search engine allows for a simple full text search within the monuments. Enter a search term and press START SEARCH. The matching monuments are then displayed on your screen in the same way as when queried from the map.

## Options



The options control panel allows you to set the layers visible in the map:

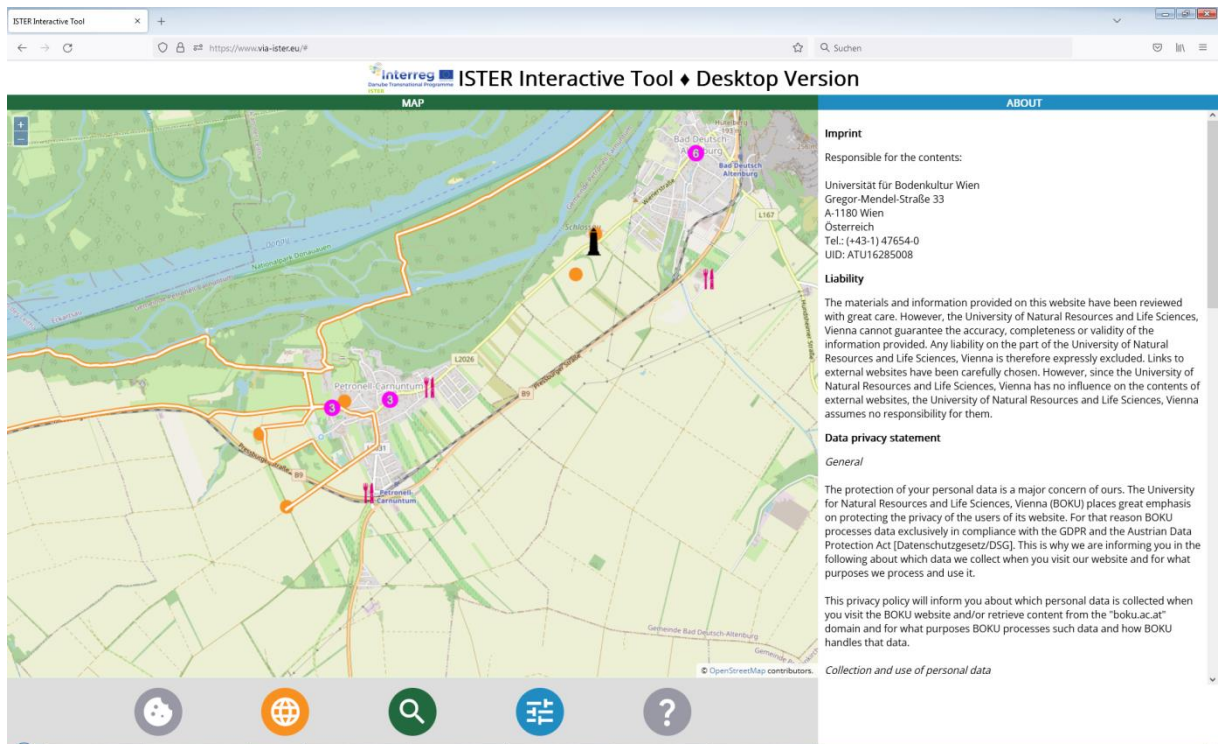
- **Show walking and cycling routes:** This switch activates the walking and cycling routes layer in the map. Walking and cycling routes are displayed as orange lines with a white centreline.
- **Show Roman monuments:** This switch lets you see the locations of Roman monuments in the map. Roman monuments are displayed as orange circles. As Roman monuments are the key element of the Interactive Tool, you cannot turn off this switch.
- **Show VIA ISTER milestones:** VIA ISTER Milestones are stone plates carrying an engraved metal plate with a QR code. These milestones are available at selected locations near Roman monuments. You may scan the QR code with the inbuilt QR code scanner of the Interactive Tool or with any other QR code scanner of your choice. If the layer is not visible although turned on, you need to zoom deeper into the map.
- **Show places to eat/drink (restaurants, bars, ...):** This switch activates a map layer which displays restaurants and bars in the map. Single restaurants are shown with a pink fork and knife icon. Wherever these icons would overlap due to the density of restaurants or bars, they are grouped to a pink circle with the number of grouped elements shown inside the circle. To ungroup these elements, zoom deeper into the map. Also, if the layer is not visible although turned on, you need to zoom deeper into the map.
- **Show public transport stops:** This switch activates a map layer which displays public transport stops in the map. Single public transport stops are shown with a white square with a blue outline. Wherever these icons would overlap due to the density of public transport stops, they are grouped to a blue square with the number of grouped elements shown inside the circle. To ungroup these elements, zoom deeper into the map. Also, if the layer is not visible although turned on, you need to zoom deeper into the map.
- **Show places to buy food and drinks:** This switch activates a map layer which displays places to buy food and drinks in the map. Single places to buy food and drinks are shown with a brown shopping cart icon. Wherever these icons would overlap due to the density of places



to buy food and drinks, they are grouped to a brown circle with the number of grouped elements show inside the circle. To ungroup these elements, zoom deeper into the map. Also, if the layer is not visible although turned on, you need to zoom deeper into the map.

- Show accommodation (hotels, ...): This switch activates a map layer which accommodation locations in the map. Single places to buy food and drinks are shown with a purple bed icon. Wherever these icons would overlap due to the density of accommodation locations, they are grouped to a purple circle with the number of grouped elements show inside the circle. To ungroup these elements, zoom deeper into the map. Also, if the layer is not visible although turned on, you need to zoom deeper into the map.

## About



The about page shows necessary and/or mandatory information due to Austrian and EU legislation: Imprint, Liability, Data Privacy Statement, Cookies, Right to information, rectification, erasure or restriction; Right to object; Possibilities to lodge a complaint with the Data Protection Authority, Disclaimer for Links to external websites (external links), Contact Details.